

MOSAIC LINER



A new generation composite lining which has the advantage of steel as well as rubber. The high hard steel, placed in rubber matrix gives excellent resistance to impact wear together with absorption of impact energy giving the liner extended working life of three to four times than liners made either of steel or rubber. An additional layer of rubber under steel back plate gives the liner extended life under very high impact application.

This patented (applied) product design is ideally suitable for chutes/ hoppers handling lump ores. The spacing of steel in the rubber matrix has been done in the manner which makes the liner suitable to handle even fines mixed with lump ores. The edges of liner are made of rubber ensuring that unlike steel liner, MOSAIC LINER will not rip the conveyor belt in the eventuality of the liner dislodging from the chute / hopper.

Product size

300 x 300 mm
500 x 500 mm
All plates are available of thickness 50 & 60mm.
Non standard sizes can be provided on request.

APPLICATION AREAS

Impact areas of chutes and hoppers

FEATURES

High hard steel in rubber matrix

Rubber below the backing plate

Rubber matrix is present on all sides of high hard steel

BENEFITS

Improves high impact wear life.
Longer life than only rubber or steel liners.
Reduced sound as compared to steel liners.

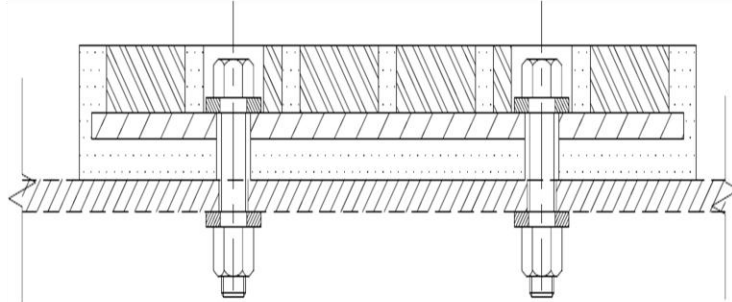
Improves energy absorption.

Eliminates chances of belt damage in case of liner dislodging.

FIXING ATTACHEMENT OF MOSAIC LINER:

MOSAIC LINER is conventionally fixed to mother plate with nut and bolt fastening.

Alternatively: Studs can be used specific requirements.



**TEGA MOSAIC LINER INSTALLED IN CHUTE HANDLING IRON
ORE LUMPS**